

The nameplate attached to the inside or rear of the appliance (depending on the model) includes the entire information specific to your appliance.

We recommend that you make a note of its serial number in this booklet prior to installation, so that you can refer to it later (technical work, request for assistance, etc.).



Once the appliance is installed and loaded, access to it is not so easy.

**CAUTION: no assistance can be provided without this information.**

## **4. INSTALLATION INSTRUCTIONS**

### **Before using this appliance**

- Remove the exterior and interior packing.
- Before connecting the appliance to the power source, let it stand upright for approximately 24 hours. This will reduce the possibility of a malfunction in the cooling system from handling during transportation.
- Clean the interior surface with lukewarm water using a soft cloth.
- When disposing your appliance, please choose an authorized disposal site.
- Place your wine cooler on a position that is strong enough to support it when it is fully loaded. To level your wine cooler, adjust the front leveling leg at the bottom of the wine cooler.
- Adequate ventilation is required, do not block the front air outlet.
- Not designed for placement in adage or basement.
- The appliance is for indoor use only.
- This device is designed to be incorporated into fitted kitchen units.
- Connect the cellar to a single socket and be careful to support it, so that your wine cellar is perfectly level (use of a spirit level is recommended). This will prevent any movement due to instability, causing noise and vibration, and will ensure that the door seals perfectly.
- This appliance is intended to be used exclusively for the storage of wine.
- This appliance is using flammability refrigerant. So never damage the cooling pipe work during the transportation.

### **Attention**

- Store wine in sealed bottles.
- Do not overload the cabinet.
- Do not open the door unless necessary.
- Do not cover shelves with aluminum foil or any other shelf material which may prevent air circulation.
- Should the wine cooler be left empty for long periods it is suggested that the appliance is unplugged, and after careful cleaning, leave the door ajar to allow air to circulate inside the cabinet in order to avoid possible condensation, mold or odors forming.

**CAUTION:** please keep the appliance away from substance, which can cause ignition.

#### **Ambient room temperature limits**

This appliance is designed to operate in ambient temperatures specified by its temperature class marked on the rating plate.

CLASS	SYMBOL	AMBIENT TEMPERATURES RANGE (°C)
Extended temperate	SN	From +10 to +32
Temperate	N	From +16 to +32
Subtropical	ST	From +16 to +38
Tropical	T	From +16 to +43

**This refrigerating appliance is intended to be used at ambient temperatures ranging from 10 °C to 32 °C**

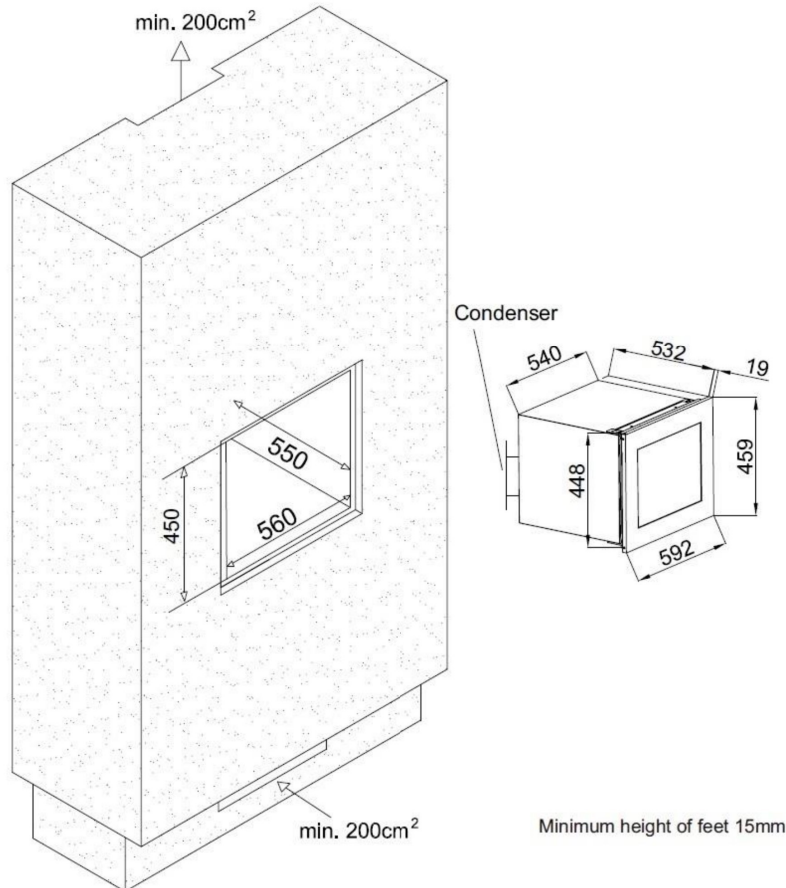
#### **Built-in installation drawing**

The wine cooler door seals the installed unit almost completely.

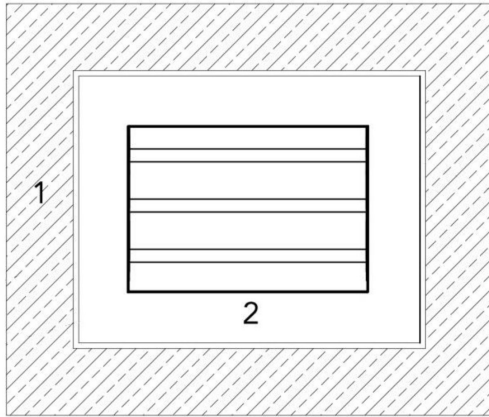
**CAUTION:** for all of these models, please take into consideration the clearances required for air intake and exhaust.

Hot air must be driven by the ventilation to the rear wall of the cellar and then expelled upwards. The ventilation channels shall be at least 200 square centimeters in cross-section.

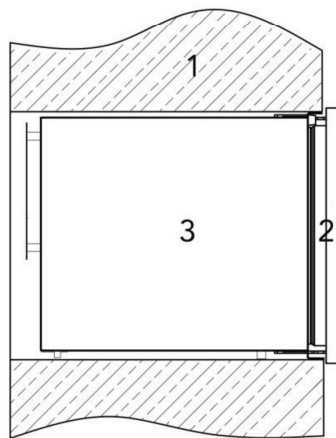
Warning: to ensure proper operation, the ventilation grilles must never be obstructed or covered.



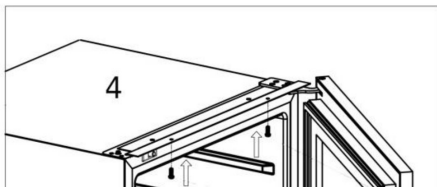
## Installation of your wine cellar



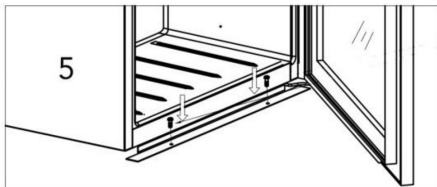
→ Step A



→ Step B



→ Step C



- 1) Kitchen cabinet
- 2) Door part
- 3) Body part
- 4) Upper part of the wine cellar
- 5) Bottom part of the wine cellar

- A. Install your wine cellar into the kitchen cabinet, having first checked that the dimensions correspond exactly to those indicated on the installation drawing.
- B. Once your wine cellar properly positioned into the kitchen cabinet, **please adjust it as close as possible to the edges of the kitchen cabinet. Make sure that your appliance is flushed with the kitchen cabinet in order to ensure a functional push-pull opening system.**
- C. Once black mounting bars are installed as close as possible to the edges of the kitchen cabinet, test the push-pull system to open and close the door. Once the test is successful, please screw the upper fixing bar and the lower one (2 screws at the top / 2 screws at the bottom) in order to correctly install your wine cellar.



**Improper installation of your appliance will not allow the push-pull system to function properly to open or close the door. Make sure to follow the instructions above.**

### Opening and closing push-pull system

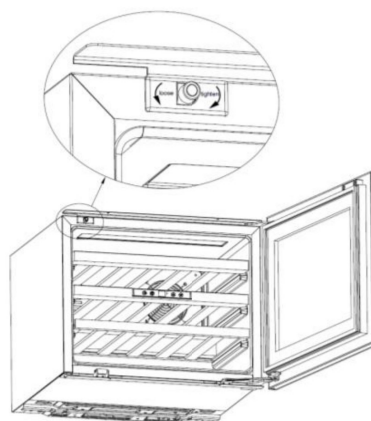
Press the opening zone and wait for a few seconds before the opening system can trigger. This is normal that there is a delay between pressing the upper left zone of your wine cellar and the moment the door opens.



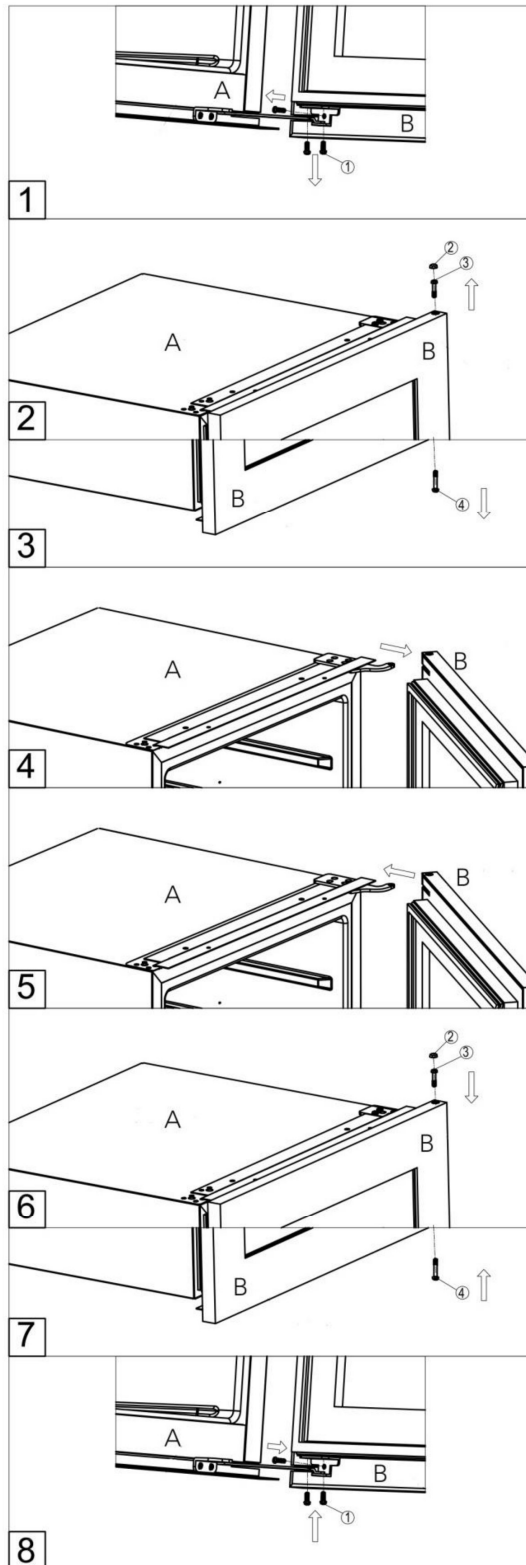
In addition, and as shown in the following drawing, the system can be adjusted a few millimeters by screwing or unscrewing it to allow the door to be properly closed and opened. However, be careful not to unscrew it too much because door gasket must remain sealed when the wine cellar is closed to have a door perfectly hermetic.



**A non-hermetic door gasket caused by an improper push-pull system adjustment can lead to frost or even freezing at the fan.**



## Door replacement



A. Cabinet  
B. Door

1) Remove the three screws marked No.1

2) Remove the screw cover No.2 and the screw No.3

3) Remove screw No. 4

4) Remove the door and carefully place it away from the cellar

5) Carefully install the new door by positioning it in the appropriate place

6) Re-install the screw No.3 and the cover

7) Re-install the screw No.4

8) Re-install the 3 screws No.3